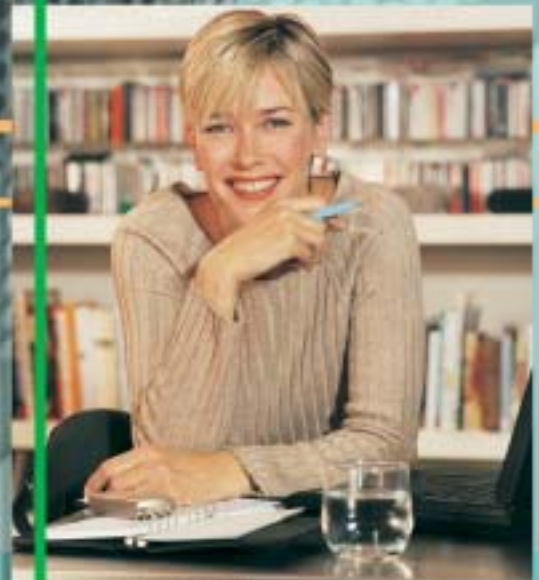


Canon

imageRUNNER®
110



PRODUCTION
SYSTEMS



imageRUNNER®
1 1 0

PRODUCTION SYSTEMS

THE HIGH-SPEED, HIGH-VOLUME
DIGITAL PRODUCTION SYSTEM THAT
OFFERS VALUE-ADDED PERFORMANCE
UNRIVALED IN ITS CLASS.

Behold the Canon imageRUNNER® 110... a supercharged, digital, high-performance machine that will redefine your concept of document production. A 110-page-per-minute productivity powerhouse, the imageRUNNER 110 incorporates a Web browser-based interface, a new standard for image quality, and an extensive range of capabilities and finishing options designed to significantly improve your productivity.

Equally at home in a central reproduction department, print-for-pay operation, or print-on-demand environment, the imageRUNNER 110 simplifies the time- and labor-intensive demands of today's increasingly complex production jobs and their punishing deadlines. This means you'll be able to work more efficiently and productively than ever before.

Now, if all this sounds good, wait until you see how great it looks on paper! Thanks to a revolutionary new, high-definition imaging technology, the Canon imageRUNNER 110 delivers image quality that, undisputedly, is "best in class."



START WITH THE CANON imageRUNNER 110...
FINISH WITH EASE.



The imageRUNNER 110 comes complete with a three-drawer, 4,000-sheet paper module, touch-sensitive operator control interface, SunSM Print Controller with 512MB Marking Image Path, and a finisher, offering exceptional paper-handling, automatic document-feeding, 600-dpi resolution and batch scanning, plus a wide range of automatic finishing capabilities. With the Canon imageRUNNER 110, you'll create more complex documents in less time, with less manual intervention.

Finishing options, such as measured-stitch, single- and double-position stapling of up to 100 sheets, stacking, saddle-stitched booklet-making, in-line perfect binding, punching, and more, are all processed lightning fast, at 110 pages per minute. Post-process inserts are merged with printed documents automatically on-line using the optional Inserter Module. Features such as Image Overlay, Edge Erase, Cover/Letterhead Insertion, and Subset Stapling can be programmed easily using the handy touch-screen. With the Canon imageRUNNER 110, you can produce a variety of professional-looking documents with minimal effort.



Machine pictured with optional accessories.

ACCESSORIES THAT ENHANCE YOUR OPTIONS.

In addition to the standard capabilities offered by the imageRUNNER 110, a number of productivity-enhancing accessories are available.

Optional Paper Supply Module—Up to two[▲] additional three-drawer, 4,000-sheet units can be added, increasing total paper capacity to 12,000 sheets.

Optional Inserter—A three-drawer, 4,000-sheet unit that feeds preprinted stocks post process.

Optional Puncher—Fully integrated hole-punching capability. Many optional punch tools are available.

Optional Stacker—Generous 5,000-sheet capacity (up to 14" x 18" paper*) for work requiring off-line finishing. Features a rolling, removable dolly for speedy off-loading and transport of finished documents. (Additional dollies may be purchased to facilitate continuous workflow.) Will automatically rotate pages for Booklet-maker.

Optional Booklet-maker (Requires Stacker for Operation)—Creates booklets of up to 88 pages (22 sheets). Saddle-stitches and folds output for 5-1/2" x 8-1/2" signature booklets, 8-1/2" x 11" booklets, and more. The optional Booklet-maker also includes a trimmer and a tray capable of holding up to 42 booklets.

Optional Perfect Binder (Requires Stacker for Operation)—Binds books from 15 to 350 sheets of 20 lb. Bond paper. Mills spines and applies adhesive for a high-quality finished product.

Optional BPRF (Requires Stacker and Perfect Binder for Operation)—Enables two-up printing with the Perfect Binder, enhancing productivity.

Paper-handling That's Virtually "Hands-off"

Three standard paper drawers, providing a generous 4,000-sheet capacity, are able to handle paper stock in weights of up to 110 lb. Index and support sizes up to 14" x 18".* Add up to two[▲] extra optional Paper Supply Modules, and you can have complete documents assembled automatically, from up to nine different paper supplies. The imageRUNNER 110 enables you to create a document using text paper, colored stock inserts or separators, different front and back covers, and cut tabs faster than ever before. There's even an expanded toner supply, large enough to produce more than 80,000 images at 6% coverage, without replacement.

[▲] Please check with your local Canon-authorized dealer for availability.

* Some paper sizes may require additional Kit.

Inserter



Paper Supply Module



Perfect Binder



3,000-sheet Finisher Tray



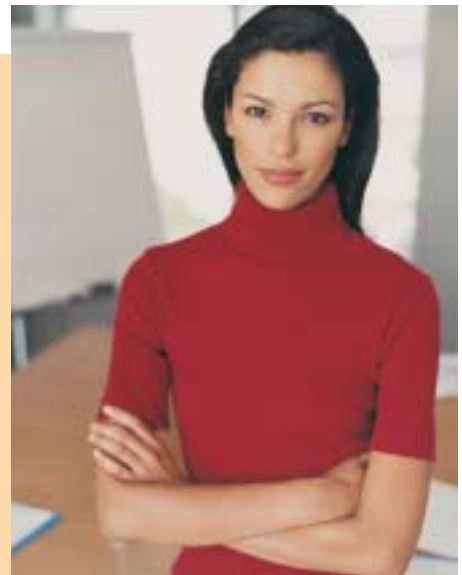
STATE-OF-THE-DIGITAL-PRODUCTIVITY-ART.

Whether you measure productivity by hours and days, dollars and cents, or the sheer lack of operator frustration, Canon's imageRUNNER 110 will allow you to reach your optimum production potential.

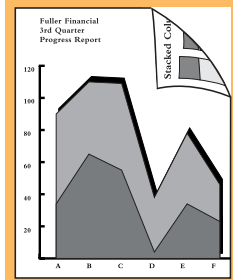
In today's 24/7 global economy, when "later" is out of the question, "sooner" is never soon enough, and "It can not be done" is no longer an option, the imageRUNNER 110 is the system you need to streamline the entire document-production process and accelerate the workflow. By operating all features and accessories virtually non-stop at 110 pages per minute, your business will get more done in less time and look better in the process. Take a look at some of the imageRUNNER 110's many capabilities:

- Work is accepted from several different input streams—networks, stored document files, scanned hard copy, data print streams.
- The touch-sensitive operator control interface is easy to use.
- Superior registration assures accurate placement of images front to back and page to page.
- Multiple job setups can be stored for repeat print runs.
- High-speed RIP image processing continuously sends jobs to the large-capacity job spooler (Marking Image Path) to keep the engine running at full speed.
- An optional Scan Station Subsystem manages hard-copy duplication jobs.
- High-speed finishing options eliminate the need for off-line work.

So when you have just minutes to make an express pick-up, or have an urgent job that just can't wait—not to mention a client you can't afford to lose—you need the exceptional productivity power of the Canon imageRUNNER 110.



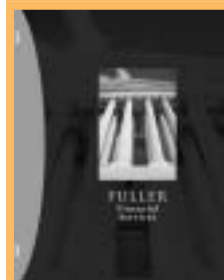
Duplexing



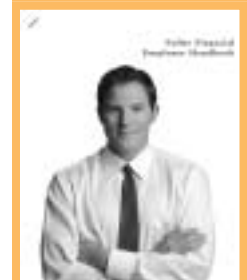
Saddle-stitched Booklet-making



Double-position Stapling



Single-corner Stapling





TOP-OF-THE-LINE MEETS YOUR BOTTOM LINE.

In today's fast-changing business environment, your operation can never be too efficient. The bottom line is the only line that counts—and you're accountable. To stay ahead of the competition, you must leverage every resource to its fullest. That's why you need the Canon imageRUNNER 110 more than ever.

With the imageRUNNER 110, Canon offers digital expertise, network connectivity know-how, and reliable operation to ensure that your document production system always performs at peak productivity and availability. By taking advantage of Canon's most advanced digital and network technologies, you'll drive operating costs in a better direction—DOWN—transforming your cost center into an efficiency center. And when you're turning out up to two million pages each month, the cost-savings add up. So how does a top-of-the-line, networked production system so technologically advanced get to be so value-conscious at the same time? Therein lies the secret to Canon's ongoing success.

Image Quality That Can't Be Upstaged

Turn on the imageRUNNER 110, and you're activating the most advanced imaging technology ever offered on a networked production system. A high-definition imaging process, this system delivers offset-quality printing to give your documents the impact they deserve. You'll see the difference in the stunning text and detailed graphics, and the continuous-tone photographs and artwork that reproduce with unusual clarity and definition. You'll enjoy page after page of rich, dense, solid areas and clear backgrounds. With the imageRUNNER 110, you'll easily meet the critical requirements that your most important applications demand.

TECHNOLOGY THAT DOESN'T PUSH YOUR BUTTONS.

Technology isn't supposed to be difficult. It should simplify your life, not complicate it. At Canon, we've always worked to make even our most advanced products understandable and user-friendly. The imageRUNNER 110 takes this ideal to a new level.

Interactive Touch-screen Control

An intuitive, touch-screen display makes it easy to program a wide range of automatic options. Visible feedback and clear graphics simplify the entire process, greatly reducing training time for operators. Based on a familiar Web browser, the user-interface allows operators to monitor all activities from the touch-screen. Additionally, bright LED indicators allow you to check the paper supply from across the room while the system automatically switches paper drawers to provide continuous-run operation.

Interactive Touch-screen Control



The imageRUNNER 110's Job Management Window streamlines and simplifies daily production workflow. The detailed display provides operators with everything they need to know to keep high volumes of jobs moving through the system smoothly. Error conditions and workflow problems are clearly indicated so that they can be quickly remedied. Jobs in the print queue can be re-ordered, moved, or deleted as needs require. Jobs can also be grouped together in specific queues by classification or print specifications. A document library is also supported through the Sun print controller so that scan and print jobs can be archived for later use.

A NETWORK-CONNECTED PRODUCTION SYSTEM FROM THE COMPANY MOST QUALIFIED TO OFFER IT.

Providing more power without creating more complexity. Making networked document production more seamless, more efficient, more intelligent than ever before.

As the leading supplier of network-connected imaging devices, Canon has established the standard for open architectures, image quality, modular design, and reliable performance. So when you need more than normal printing, install an imageRUNNER 110 and upgrade your operation to a high-volume, networked production environment.

Productivity-enhancing Systems

What powers the imageRUNNER 110's performance is an all-new print controller based on the latest Sun computing platform. Together with Ethernet connectivity, high conversion speeds in the Raster Image Processor (RIP), and electronic job-spooling in the Marking Image Path (MIP), it delivers workflow performance you never thought possible. The MIP allows the imageRUNNER 110 engine to be loaded with page data in a continuous manner, maximizing productivity and engine throughput.

Time-saving Software Capabilities

The imageRUNNER 110 printing system supports Adobe® PostScript® 3,™ PCL, PDF, and TIFF output. Access to printing and library services functions on the device are delivered through the use of customized print driver software for Windows® and Macintosh® platforms. Print drivers for client workstations offer full machine functionality from the desktop. Through the system software, users and administrators are able to create output requests for submission to the device in job-ticket form, specifying such features as duplexing, offset stacking, slip-sheet insertion, folding, stapling, collating, paper substitution, and more. This software makes sending, storing, managing, printing, and finishing documents more convenient for both the end-user and the production operator.

Job Management



Document Retrieval Library



Retrieve/Print Settings



Scan Settings



INTELLIGENT QUEUING...A BRILLIANT WAY TO STREAMLINE YOUR WORKFLOW.



The Intelligent Queuing System on the imageRUNNER 110 gives the operator complete control of the workflow. Jobs may be prioritized, reordered, moved, or deleted as changing requirements demand.

With Intelligent Queuing, the operator has the ability to move jobs between print queues, store jobs in a specific queue for future access, or group certain kinds of jobs together by classification or electronic print specifications. Enhanced print-ticket job management allows the operator to view and edit print settings without affecting job integrity while the job awaits printing in a specific queue.

For example, Intelligent Queuing allows you to queue up all jobs requiring three-hole-punched paper, group together all jobs of 100 pages or more, or hold all booklet jobs for processing on the same day, just to name a few. The system is structured so that if the required paper stock for a certain job is unavailable, the jobs behind it will queue up ahead automatically, keeping the print engine running without interruption. The queue management window displays the number of jobs in each queue, the size of the jobs, and the status of print queues.

Never has a single system done so much for so many, so easily. Canon's Intelligent Queuing System enables the server to assist the decision-making process of the printing environment. And that means a streamlined workflow plus greater productivity for any production environment.

Image Quality Extended Settings



Scanning Special Features



Paper Catalog



DOCUMENT MANAGEMENT SO COMPLETE, YOU EVEN GET DETAILED STATUS REPORTS.

The imageRUNNER 110 Job Management window displays everything the production operator needs to know about every job being processed—from Job ID Number, and Name and Owner to Prints/Sets requested to Job Status (Mismatch, Proof, Attention, Processing, Processed, Printing, Interrupted). Any error conditions are clearly indicated, allowing the operator to remedy any problem that could impede the workflow. If, for any reason, a job does not print correctly, the operator simply copies the job from the archive queue, then reprints it to order.



imageSCANNER 65

Scan Station Interface



A Higher Level of Functionality

Supported through the Sun Controller, an extensive storage sub-system is available to spool system print jobs, archive jobs for later use, and house a comprehensive document library essential for merging documents and streamlining document management—capabilities not found on other systems in this class. For example:

Document Library Access—Provides users with varying degrees of access for storage and retrieval of documents in the library.

Scan, Store, and Scan-Print-Store—Permits operators to scan documents for storage, as well as scan, print, and store.

Archiving—Provides the ability to store jobs in a specific queue for a period of time specified by the operator.

Document Assembly*—Allows images to be viewed as thumbnails or single pages for compound document assembly and new-document creation. Functions available include cut, copy, paste, add a page, delete a page, reorder pages, create new document, undo, and modify print settings.

** Available in AP configuration.*

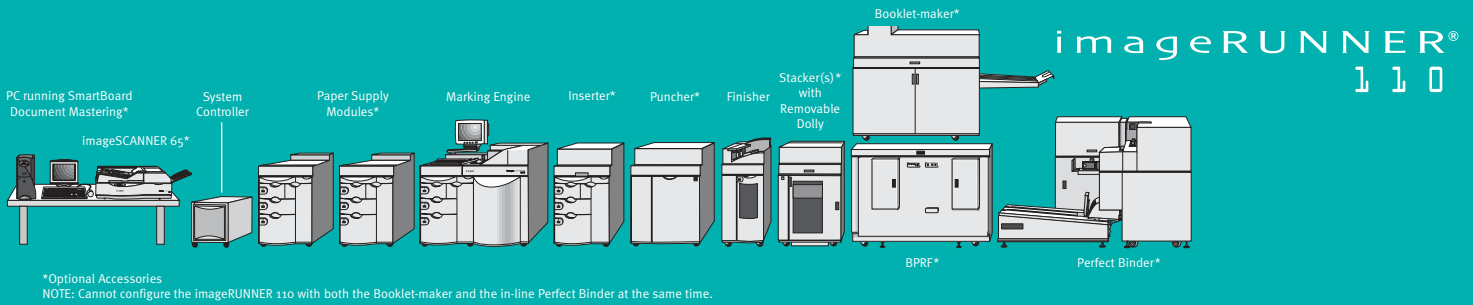
RELIABILITY YOU CAN COUNT ON
IN COUNTLESS WAYS.



Your business depends on reliable performance. That's why Canon builds all its products to the most rigorous standards. And the way the imageRUNNER 110 keeps going, day after day, month after month, year after year, is testimony to that. Ruggedly built for reliable, round-the-clock operation, the imageRUNNER 110 is designed to require minimal maintenance so when demand goes up, your system won't go down. And you can count on Canon to offer easy system upgrades to accommodate your business growth.

Canon's advanced service diagnostics system has revolutionized troubleshooting to minimize interruptions and maximize uptime. It's all part of Canon's dedication to preventive engineering—one of the reasons Canon has its reputation for unparalleled reliability.

As a world leader in digital reproduction technology, with one of the largest, most comprehensive sales, service, and technical support networks, Canon is ideally suited to provide you with the most reliable solutions to your networked document-production and information-management needs.



*Optional Accessories
NOTE: Cannot configure the imageRUNNER 110 with both the Booklet-maker and the in-line Perfect Binder at the same time.

imageRUNNER 110 Specifications

Configuration/Platen:	Digital, Multifunction Imaging System
Imaging System:	Electrophotographic Process
Developing System:	SPD, Two Component Dry
Acceptable Originals:	Sheets, Transparencies, Tabs, Covers
Max. Originals Size:	14" x 18"
Max. Print Size:	14" x 18"
Min. Print Size:	8" x 10"
Engine Resolution:	600 dpi x 600 dpi
Paper-feeding:	3-drawer Modular
Paper Capacity	
Standard:	4,000 Sheets
	Drawer 1 (Top): 1,000 Sheets (20 lb.)
	Drawer 2: 1,000 Sheets (20 lb.)
	Drawer 3: 2,000 Sheets (20 lb.)
Maximum:	12,000 Sheets *
Acceptable Paper Weight:	16 lb. Bond to 110 lb. Index (All Cassettes)
Duplexing:	Trayless Duplexing (Except Tabs)
Warm-up Time:	6 Minutes
Print Speed:	110 ppm (LTR/LGL), 55 ppm (LDG)
Dimensions (H x W x D):	64" x 65" x 47" (162.6cm x 165.1cm x 119.4cm)
Weight:	1,500 lb. (680.4kg) Marking Engine
Power Requirements:	100 - 120 VAC/200 - 240 VAC, 60/50Hz
Power Consumption:	5,700 Watts
Developer:	1.69kg—Estimated Yield: 600,000 Prints (LTR)
Duty Cycle:	2,000,000 Impressions per Month (3 Shifts)
Toner:	2.5kg—Estimated Yield: 80,000 Prints (LTR, 6% Coverage)

Accessories

Finisher	
Number of Trays:	2 Trays
Tray Capacity	
Top Tray:	500 Sheets (All Sizes) Non-staple Mode
Staple Tray:	3,000 Sheets (Straight or Offset/ 85 Sets with Staple)
Paper Size	
Top Tray:	8" x 10" to 14" x 18"
Staple Tray:	8" x 10.5" to 9" x 14"
Staple Position:	Multiposition Stapling
Stitching Capacity:	None, Top, Bottom, Both
Document Delivery:	Face-down
Staples:	50,000
Power Supply:	Directly from Main Unit
Weight:	650 lb. (294.7kg)
Dimensions (H x W x D):	61.5" x 22" x 34" (156.2cm x 53.3cm x 86.4cm)

imageSCANNER 65 Production Scanner* (Optional)	
Optical Resolution:	600 dpi x 600 dpi
Speed (Simplex/ Duplex LTR/A4):	65/36 ppm
Paper Feeder Capacity:	100 Sheets (LTR, 20 lb.)
Paper Size Ranges:	5.5" x 8.5" to 11" x 17", A5 to A3
Paper Weight Ranges:	16 lb. Bond to 110 lb. Index, 60 to 200 g/m ²
Weight:	200 lb. (90kg)
Dimensions (H x W x D):	15" x 39" x 27" (38.1cm x 99cm x 66.6cm)

Paper Supply Module (Optional)

Number of Trays:	3 Cassettes
Tray Capacity	
Drawer 1 (Top):	1,000 Sheets (20 lb.)
Drawer 2:	1,000 Sheets (20 lb.)
Drawer 3:	2,000 Sheets (20 lb.)
Paper Size:	16 lb. Bond to 110 lb. Index
Weight:	545 lb. (247.4kg)
Dimensions (H x W x D):	45" x 31" x 33.5" (114.3cm x 78.7cm x 83.8cm)

Post-process Inserter (Optional)

Number of Trays:	3 Cassettes
Tray Capacity	
Drawer 1 (Top):	1,000 Sheets (8" x 10" to 9" x 14")*
Drawer 2:	1,000 Sheets (8" x 10" to 14" x 18")*
Drawer 3:	2,000 Sheets (8" x 10" to 14" x 17")*
Paper Weight:	16 lb. Bond to 110 lb. Index, 60 to 200 g/m ²
Weight:	610 lb. (276.7kg)
Dimensions (H x W x D):	49.5" x 31" x 33.5" (125.7cm x 78.7cm x 85.1cm)

Puncher (Optional)

Power Requirements:	120 VAC, 60Hz, 2.5A 100 VAC, 50/60Hz, 2.5A
Power Consumption:	320 VA
Dimensions (H x W x D):	49.6" x 40.2" x 31.9" (126cm x 102cm x 81cm)
Weight:	595 lb. (270kg)
Punch Tools	
	<ul style="list-style-type: none"> • Loose-leaf/Office Hole-punch Tool (2-/3-/4-hole) • Plastic Comb Punch Tool (Rectangular) • Wire Comb Punch Tool 2-1 Pitch (Round) • Wire Comb Punch Tool 3-1 Pitch (Round) • Wire Comb Punch Tool 2-1 Pitch (Rectangular) • Wire Comb Punch Tool 3-1 Pitch (Square)
Punch Tool Durability:	12 - 15 Million Actuations

Stacker (Optional)†	
Number of Trays:	1 Tray
Tray Capacity:	5,000 Sheets (Straight or Offset Non-staple) 8" x 10" to 14" x 18"
Paper Size:	Rotates 8-1/2" x 11" Portrait Sheets
Rotator Unit:	90 Degrees
Document Delivery:	Face-down
Power Supply:	115V
Weight:	450 lb. (203.7kg)
Dimensions (H x W x D):	49.5" x 33" x 31.6" (125.7cm x 84.8cm x 78.7cm)

Booklet-maker (Optional)

Tray Capacity:	Conveyor Belt Output
Paper Size:	8" x 10" to 14" x 18"
Stitching Capacity:	2 to 22 Sheets
Stitching Position	
Single-position Stapling:	2 Center Staple Positions
Saddle-stitch Specifications	
Folding:	V-folding
Folding Capacity:	1 to 22 Sheets (20 lb. Bond)
Trimming:	Edge Trim Folded Booklets (Adjustable Trim Width)
Staple Wire Spool:	40,000 (100-sheet Stitches)
Power Supply:	115V
Weight:	970 lb. (439.8kg)
Dimensions (H x W x D):	58" x 100" x 24" (147.2cm x 254cm x 58.4cm)

BPRF (Optional)

Power Requirements:	120V AC, 60Hz
Power Consumption:	920 Watts
Dimensions (H x W x D):	51" x 64" x 31" (1290mm x 1620mm x 780mm)
Weight:	562 lb. (255kg)

Perfect Binder (Optional)

Book Thickness:	15 Sheets to 1.5" (40mm) about 350 Sheets @ 20 lb. Bond
Book Size (In-line Binding):	8.5" x 11"
Book Size (Off-line Binding):	2.36" x 4" to 12" x 14" (60mm x 100mm to 305mm x 356mm)
Weight (with Input Unit, Delivery, and Bypass):	1,676 lb. (760kg)
Dimensions with Bypass (H x W x D):	45" x 8'4" x 5'11" (1.2m x 2.6m x 1.8m)

* Some paper sizes may require additional Kit.

† With optional Paper Supply Modules.

‡ Stacker is required for Booklet-maker and Perfect Binder.

§ Other optional scanners may be available. Please check with your Canon representative.

Adobe and PostScript are registered trademarks of Adobe Systems Incorporated in the United States and/or other countries. Sun is a service mark of Sun Microsystems, Inc. in the United States and other countries. Windows is a registered trademark of Microsoft Corporation in the United States and/or other countries. Macintosh is a registered trademark of Apple Computer, Inc. Canon and Canon Know How are registered trademarks, and the GENUINE Logo is a trademark of Canon Inc. IMAGERUNNER is a registered trademark of Canon Inc. in the U.S. and Canada. IMAGEANYWARE is a service mark of Canon U.S.A., Inc. All other terms and product names may be trademarks or registered trademarks of their respective owners and are hereby acknowledged.

Specifications subject to change without notice.

0041W835

0404-iR110-20M

PRINTED ON RECYCLED
PAPER IN THE U.S.A.

Adobe PostScript®

GENUINE
GENUINE PARTS & SUPPLIES

ANYWARE™

Canon KNOW HOW®

1-800-OK-CANON
www.usa.canon.com

Canon U.S.A., Inc.
One Canon Plaza
Lake Success, NY 11042